

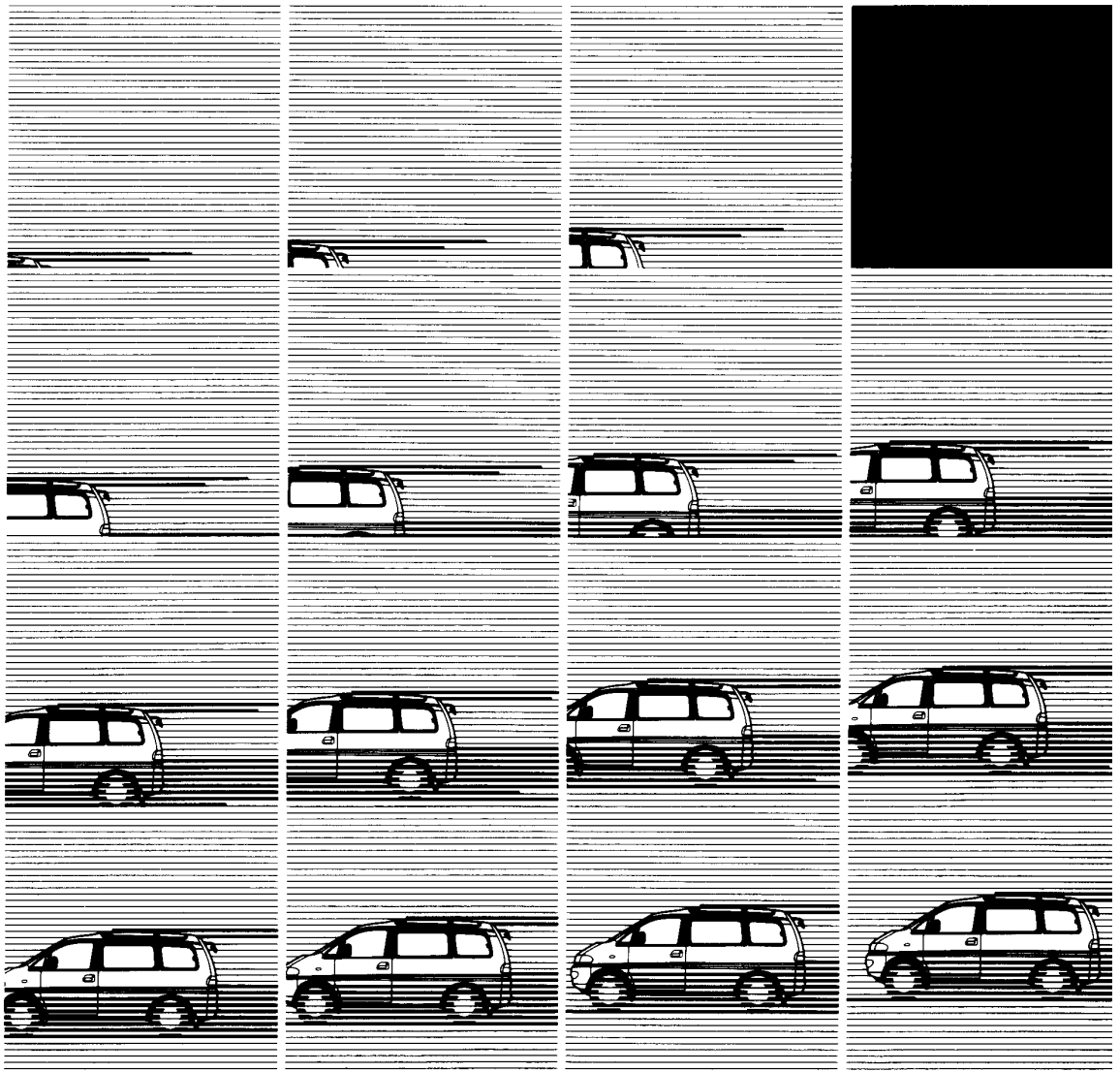


Workshop Manual

electrical wiring

SUPPLEMENT

MITSUBISHI L400 '96



Pub. No. PHWE9407-A

MITSUBISHI L400

ELECTRICAL WIRING SUPPLEMENT

FOREWORD

This publication is a supplement to the Electrical Wiring Manual Pub. No. PHWE9407 and contains only additions and changes to the original issue. It is recommended that all service mechanics engaged in the servicing of the vehicle refer to the following publications as well as this manual.

TECHNICAL INFORMATION MANUAL
PYWE9410

WORKSHOP MANUAL
ENGINE GROUP PWEE□□□□
(Loose-leaf edition)
CHASSIS GROUP PWWE9410 (Basic)
PWWE9410-A
(Supplement)
BODY REPAIR MANUAL
PBWE9404
ELECTRICAL WIRING
PHWE9407

PARTS CATALOGUE B603A805A□

All information, illustrations and product descriptions contained in this manual are correct as of time of publication. We, however, reserve the right to make changes at any time without prior notice or obligation.

GROUP INDEX

OUTLINE OF CHANGES

HOW TO READ THE
WIRING DIAGRAMS

CIRCUIT DIAGRAM



1

4



HOW TO USE THIS MANUAL

CONTENTS

The preceding page contains GROUP INDEX that lists the group title and group number.

PAGE NUMBERS

All page numbers consist of two sets of digits separated by a dash. The digits preceding the dash identify the number of the group. The digits following the dash represent the consecutive page number within the group. The page number can be found on the top left or right of each page.

OPERATION AND TROUBLESHOOTING HINTS

In the GROUP 4 circuit diagrams, the operation and troubleshooting hints are given on the previous page or following page for each circuit where necessary.

OUTLINE OF CHANGES

| | |
|--|----------|
| CIRCUIT DIAGRAM | 2 |
| TABLE OF CIRCUIT DIAGRAMS | 2 |

CIRCUIT DIAGRAM

| Circuit diagrams | | | Description of changes |
|---------------------------------|---------------------------|-----------|--|
| Main title | Subtitle | Ref. page | |
| DEFOGGER AND DOOR MIRROR HEATER | L.H. drive vehicles | 4-2 | Contents for the door mirror heater have been added. |
| REMOTE CONTROLLED MIRROR | — | 4-4 | |
| ANTI-LOCK BRAKING SYSTEM | L.H. drive vehicles <4WD> | 4-6 | The ABS circuit has been changed to correspond to changes in the ABS G sensor. |
| RHEOSTAT | — | 4-12 | The rheostat circuit has been changed to correspond to the abolition of rheostat illumination. |

TABLE OF CIRCUIT DIAGRAMS

This table of circuit diagrams indicates those circuits in which changes and/or additions, etc. have been made; the circuits are here listed in the sequence in which they are presented in the wiring diagrams. Please use this table for reference when following maintenance or repair procedures.

NOTE

- (1) The [●] symbol indicates a circuit in which a change and/or addition has been made.
- (2) The [○] symbol indicates a circuit in which no change has been made. For details please refer to the previous wiring diagrams.

| Main circuit | Circuit classifications | Pub. No. PHWE9407 (Basic) | Pub. No. PHWE9407-A (Supplement) |
|---------------------------------------|--|---------------------------|----------------------------------|
| JUNCTION BLOCK (J/B) | — | ○ | ○ |
| JOINT CONNECTOR (J/C) | — | ○ | ○ |
| CENTRALIZED JUNCTION | — | ○ | ○ |
| POWER DISTRIBUTION SYSTEM | L.H. drive vehicles | ○ | ○ |
| | R.H. drive vehicles | ○ | ○ |
| STARTING SYSTEM | L.H. drive vehicles <Petrol-powered vehicles> | ○ | ○ |
| | R.H. drive vehicles <Petrol-powered vehicles> | ○ | ○ |
| | Diesel-powered vehicles | ○ | ○ |
| IGNITION SYSTEM | Electronically-controlled carburettor | ○ | — |
| | MPI | ○ | ○ |
| CHARGING SYSTEM | — | ○ | ○ |
| GLOW SYSTEM | Vehicles with EGR system | ○ | ○ |
| | Vehicles without EGR system | ○ | ○ |
| ELECTRONICALLY-CONTROLLED CARBURETTOR | — | ○ | — |
| MPI SYSTEM | L.H. drive vehicles | ○ | ○ |
| | R.H. drive vehicles | ○ | ○ |
| OVERDRIVE CONTROL SYSTEM | — | ○ | ○ |
| HEADLAMP | L.H. drive vehicles with daytime running lamp | ○ | ○ |
| | L.H. drive vehicles without daytime running lamp | ○ | ○ |
| | R.H. drive vehicles | ○ | ○ |

OUTLINE OF CHANGES – Table of Circuit Diagrams

3

| Main circuit | Circuit classifications | Pub. No. PHWE9407 (Basic) | Pub. No. PHWE9407-A (Supplement) |
|--|--|------------------------------|-------------------------------------|
| TAIL LAMP, POSITION LAMP AND LICENCE PLATE LAMP | L.H. drive vehicles | ○ | ○ |
| | R.H. drive vehicles | ○ | ○ |
| REAR FOG LAMP | L.H. drive vehicles | ○ | ○ |
| | R.H. drive vehicles | ○ | ○ |
| HEADLAMP LEVELING SYSTEM | L.H. drive vehicles | ○ | ○ |
| | R.H. drive vehicles | ○ | ○ |
| ROOM LAMP | L.H. drive vehicles with sunroof | ○ | ○ |
| | L.H. drive vehicles without sunroof | ○ | ○ |
| | R.H. drive vehicles | ○ | ○ |
| DOOR LAMP AND STEP LAMP | — | ○ | ○ |
| GLOVE BOX LAMP | — | ○ | ○ |
| IGNITION KEY CYLINDER ILLUMINATION LAMP | — | ○ | ○ |
| TURN-SIGNAL LAMP AND HAZARD WARNING LAMP | L.H. drive vehicles | ○ | ○ |
| | R.H. drive vehicles | ○ | ○ |
| STOP LAMP | L.H. drive vehicles | ○ | ○ |
| | R.H. drive vehicles | ○ | ○ |
| BACK-UP LAMP | M/T | ○ | ○ |
| | A/T | ○ | ○ |
| HORN | Vehicles with SRS | ○ | ○ |
| | Vehicles without SRS | ○ | ○ |
| METER AND GAUGE | L.H. drive vehicles | ○ | ○ |
| | R.H. drive vehicles | ○ | ○ |
| FUEL WARNING LAMP | L.H. drive vehicles | ○ | ○ |
| | R.H. drive vehicles | ○ | ○ |
| OIL PRESSURE WARNING LAMP | L.H. drive vehicles | ○ | ○ |
| | R.H. drive vehicles | ○ | ○ |
| FUEL FILTER WARNING LAMP | L.H. drive vehicles <4D56> | ○ | ○ |
| | R.H. drive vehicles <4D56> | ○ | ○ |
| BRAKE WARNING LAMP | L.H. drive vehicles | ○ | ○ |
| | R.H. drive vehicles | ○ | ○ |
| ENGINE OIL LEVEL WARNIG LAMP | L.H. drive vehicles | ○ | ○ |
| | R.H. drive vehicles | ○ | ○ |
| MULTI-METER | — | ○ | ○ |
| CENTRAL DOOR LOCKING SYSTEM | L.H. drive vehicles | ○ | ○ |
| | R.H. drive vehicles | ○ | ○ |
| POWER WINDOWS | — | ○ | ○ |
| HEATER | L.H. drive vehicles with under seat type rear heater | ○ | ○ |
| | L.H. drive vehicles with built-in type rear heater | ○ | ○ |
| | L.H. drive vehicles without rear heater | ○ | ○ |
| | R.H. drive vehicles | ○ | ○ |

OUTLINE OF CHANGES – Table of Circuit Diagrams

| Main circuit | Circuit classifications | Pub. No. PHWE9407 (Basic) | Pub. No. PHWE9407-A (Supplement) |
|-------------------------------------|---|------------------------------|-------------------------------------|
| SINGLE AIR CONDITIONER | Electronically-controlled carburettor | ○ | — |
| | MPI | ○ | ○ |
| | Diesel | ○ | ○ |
| DUAL AIR CONDITIONER | Overhead type <Electronically-controlled carburettor> | ○ | — |
| | Overhead type <MPI> | ○ | ○ |
| | Overhead type <Diesel> | ○ | ○ |
| | Built-in type | ○ | ○ |
| WINDSHIELD WIPER AND WASHER | L.H. drive vehicles | ○ | ○ |
| | R.H. drive vehicles | ○ | ○ |
| REAR WIPER AND WASHER | — | ○ | ○ |
| HEADLAMP WASHER | — | ○ | ○ |
| DEFOGGER | L.H. drive vehicles | ○ | — |
| | R.H. drive vehicles | ○ | ○ |
| DEFOGGER AND DOOR MIRROR HEATER | L.H. drive vehicles | — | ● |
| REMOTE CONTROLLED MIRROR | — | ○ | ● |
| RADIO AND TAPE PLAYER | L.H. drive vehicles | ○ | ○ |
| | R.H. drive vehicles | ○ | ○ |
| CLOCK | — | ○ | ○ |
| CIGARETTE LIGHTER | L.H. drive vehicles | ○ | ○ |
| | R.H. drive vehicles | ○ | ○ |
| ACCESSORY SOCKET | — | ○ | ○ |
| ANTI-LOCK BRAKING SYSTEM (ABS) | L.H. drive vehicles <2WD> | ○ | ○ |
| | L.H. drive vehicles <4WD> | ○ | ● |
| | R.H. drive vehicles | ○ | ○ |
| FRONT SUNROOF | — | ○ | ○ |
| REAR SUNROOF | — | ○ | ○ |
| PART TIME 4WD SYSTEM | — | ○ | ○ |
| CRYSTAL LITE ROOF SUNSHADE | — | ○ | ○ |
| RHEOSTAT | — | ○ | ● |
| SUPPLEMENTAL RESTRAINT SYSTEM (SRS) | L.H. drive vehicles | ○ | ○ |
| | R.H. drive vehicles | ○ | ○ |
| LIGHTING MONITOR BUZZER | L.H. drive vehicles | ○ | ○ |
| | R.H. drive vehicles | ○ | ○ |
| HEATED SEAT | — | ○ | ○ |
| INTERCOOLER FAN | — | ○ | ○ |
| FUEL LINE HEATER | — | ○ | ○ |

1 HOW TO READ THE WIRING DIAGRAMS

| | |
|--------------|-----|
| MODELS | 1-2 |
|--------------|-----|

MODELS**<Standard wheelbase models>**

| Model code | | Engine model | Transmission model | Fuel supply system |
|------------|----------|--|--------------------|-----------------------|
| PA3V | GLZDEL6 | 4G63 (1,997 ml) | R5M21 (2WD-5M/T) | MPI |
| | GLZDER6 | | | |
| | NLZDEL6 | | | |
| | NLNUEL6 | | | |
| PA5V | GLZDTL6 | 4D56 (2,476 ml) with turbocharger | | Diesel Fuel Injection |
| | GLZDTR6 | | | |
| | NLZDTL6 | | | |
| PD4V | NLNDEL6 | 4G64 (2,350 ml) | V5M21 (4WD-5M/T) | MPI |
| PD5V | GLNDTL6 | 4D56 (2,476 ml) with turbocharger | | Diesel Fuel Injection |
| | GLNDTAL6 | | | |
| PA3W | NLZJEL6 | 4G63 (1,997 ml) | R5M21 (2WD-5M/T) | MPI |
| | NLZUEL6 | | | |
| | NLNUEL6 | | R4AW2 (2WD-4A/T) | |
| | NLEUEL6 | | | |
| PA4W | NSNHEL6 | 4G64 (2,350 ml) | R5M21 (2WD-5M/T) | |
| | NSEHEL6 | | R4AW2 (2WD-4A/T) | |
| | HSNHEL6 | | R5M21 (2WD-5M/T) | |
| | HSEHEL6 | | R4AW2 (2WD-4A/T) | |
| PA5W | NLZUFL6 | 4D56 (2,476 ml) with intercooler turbocharger | R5M31 (2WD-5M/T) | Diesel Fuel Injection |
| | NLNUFL6 | | | |
| PD4W | NLNUEL6 | 4G64 (2,350 ml) | V5M21 (4WD-5M/T) | MPI |
| PD5W | NLNUFL6 | 4D56 (2,476 ml) with intercooler turbocharger | V5M31 (4WD-5M/T) | Diesel Fuel Injection |
| | NLNUFAL6 | | | |

<Long wheelbase models>

| Model code | | Engine model | Transmission model | Fuel supply system |
|------------|----------|--------------------------------------|--------------------|-----------------------|
| PB3V | HLZDEL6 | 4G63 (1,997 ml) | R5M21 (2WD-5M/T) | MPI |
| | JLZDEL6 | | | |
| | JLZDER6 | | | |
| PB5V | HLZDTL6 | 4D56 (2,476 ml) with turbocharger | | Diesel Fuel Injection |
| | JLZDTL6 | | | |
| | JLZDTR6 | | | |
| | JLZDTAL6 | | | |

4 CIRCUIT DIAGRAM

DEFOGGER AND DOOR MIRROR HEATER

L.H. drive vehicles 4-2

REMOTE CONTROLLED MIRROR 4-4

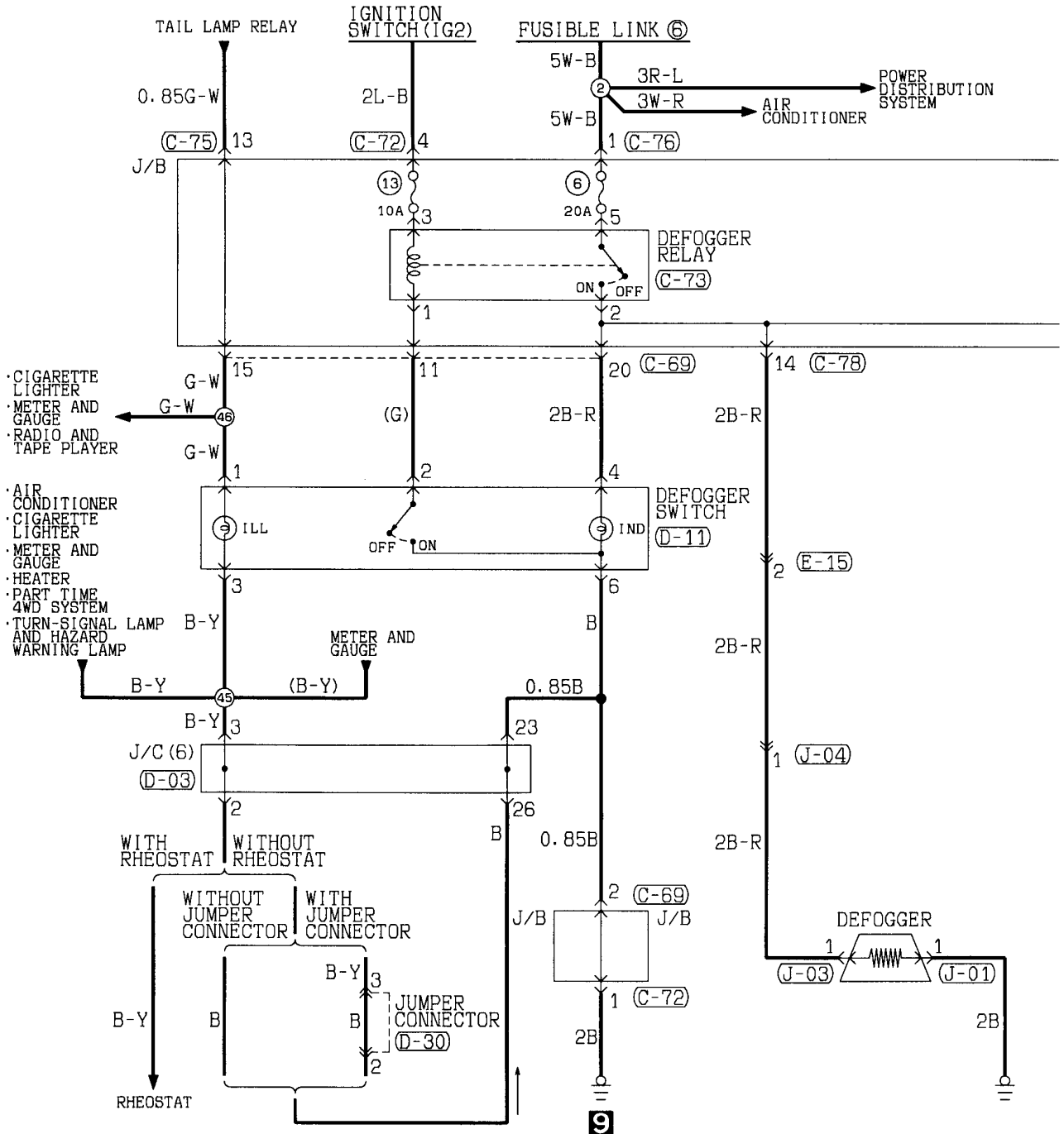
ANTI-LOCK BRAKING SYSTEM (ABS)

L.H. drive vehicles <4WD> 4-6

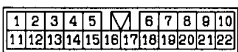
RHEOSTAT 4-12

DEFOGGER AND DOOR MIRROR HEATER

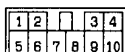
L.H. drive vehicles



C-69



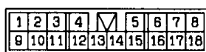
C-72



C-73



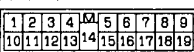
C-75



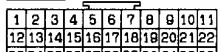
C-76



C-78



D-03



D-11



D-30



E-15



J-01

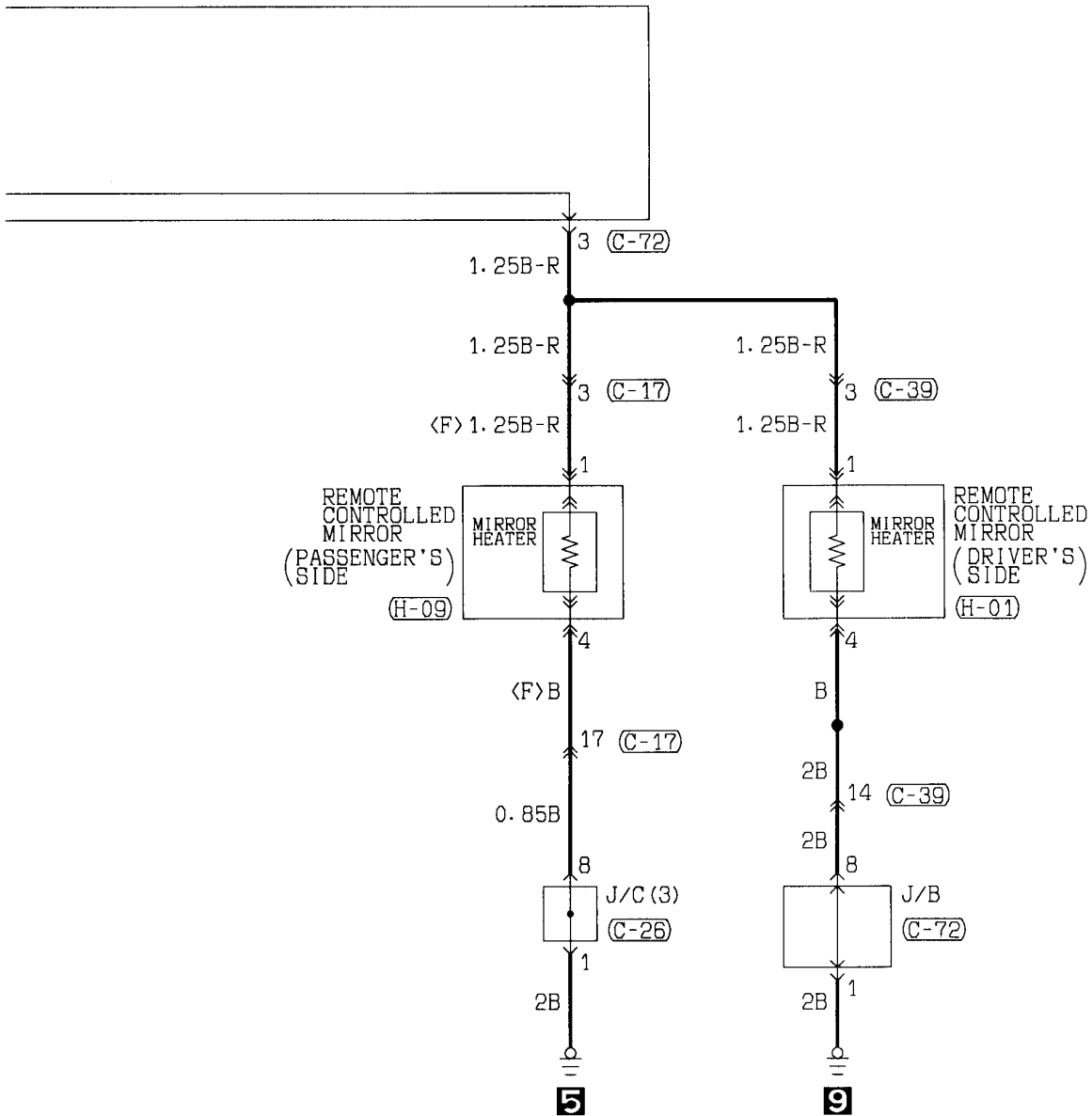


J-03



J-04





(C-17)

| | | | |
|----|----|----|----|
| 1 | 2 | 3 | 4 |
| 5 | 6 | 7 | 8 |
| 9 | 10 | 11 | 12 |
| 13 | 14 | 15 | 16 |
| 17 | 18 | 19 | 20 |

(C-26)

| | | | | | | | | | | |
|----|----|----|----|----|----|----|----|----|----|----|
| 1 | 2 | 3 | 4 | 5 | 6 | 7 | 8 | 9 | 10 | 11 |
| 12 | 13 | 14 | 15 | 16 | 17 | 18 | 19 | 20 | 21 | 22 |
| 23 | 24 | 25 | 26 | 27 | 28 | 29 | 30 | 31 | 32 | 33 |

(C-39)

| | | | | | | | | |
|----|----|----|----|----|----|----|----|----|
| 1 | 2 | 3 | 4 | 5 | 6 | 7 | 8 | 9 |
| 10 | 11 | 12 | 13 | 14 | 15 | 16 | 17 | 18 |
| 19 | 20 | 21 | 22 | 23 | 24 | 25 | 26 | 27 |
| 28 | 29 | 30 | 31 | 32 | | | | |

(C-72)

| | | | |
|---|----|---|---|
| 1 | 2 | 3 | 4 |
| 5 | 6 | 7 | 8 |
| 9 | 10 | | |

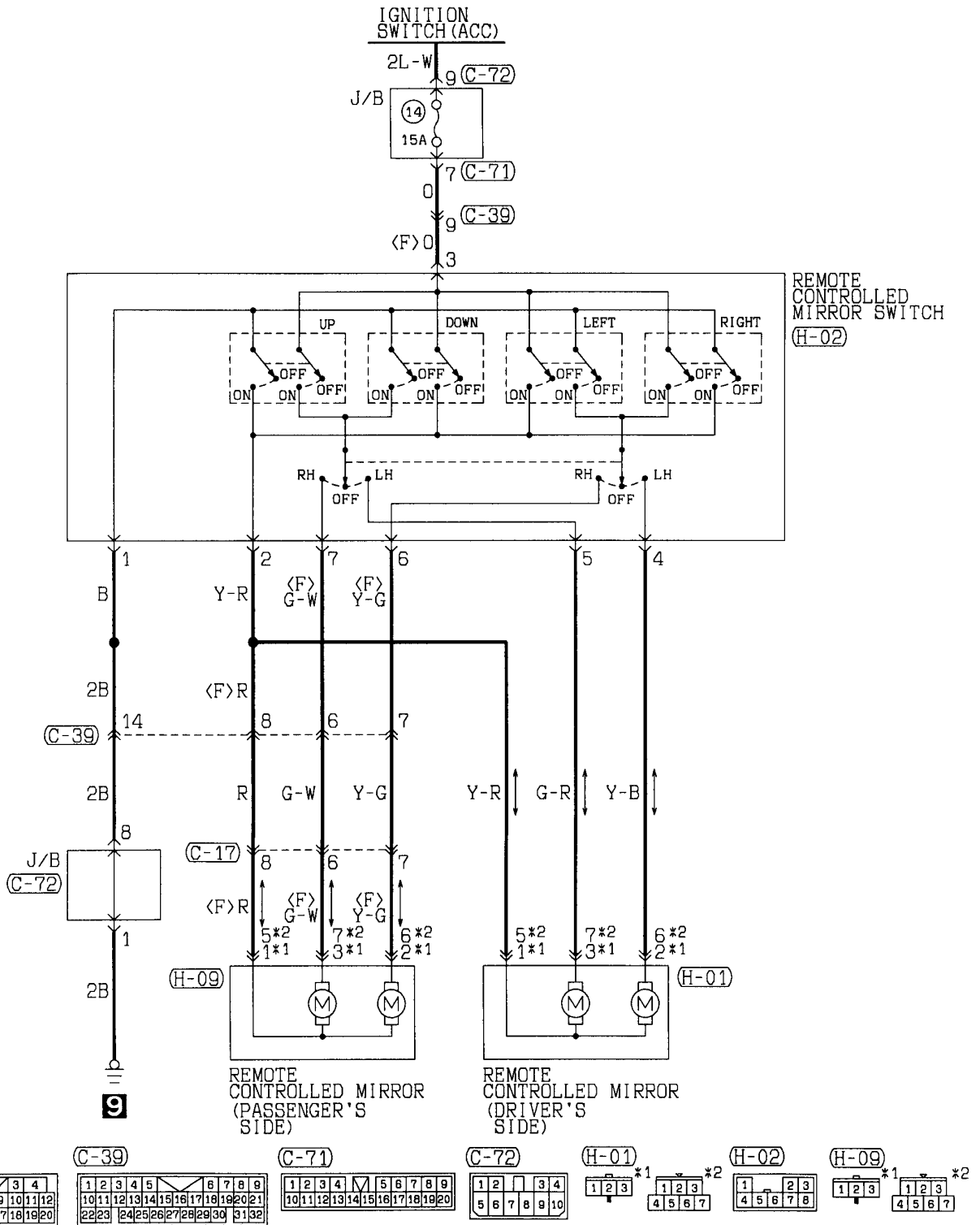
(H-01)

| | | |
|---|---|---|
| 1 | 2 | 3 |
| 4 | 5 | 6 |
| 7 | | |

(H-09)

| | | |
|---|---|---|
| 1 | 2 | 3 |
| 4 | 5 | 6 |
| 7 | | |

REMOTE CONTROLLED MIRROR

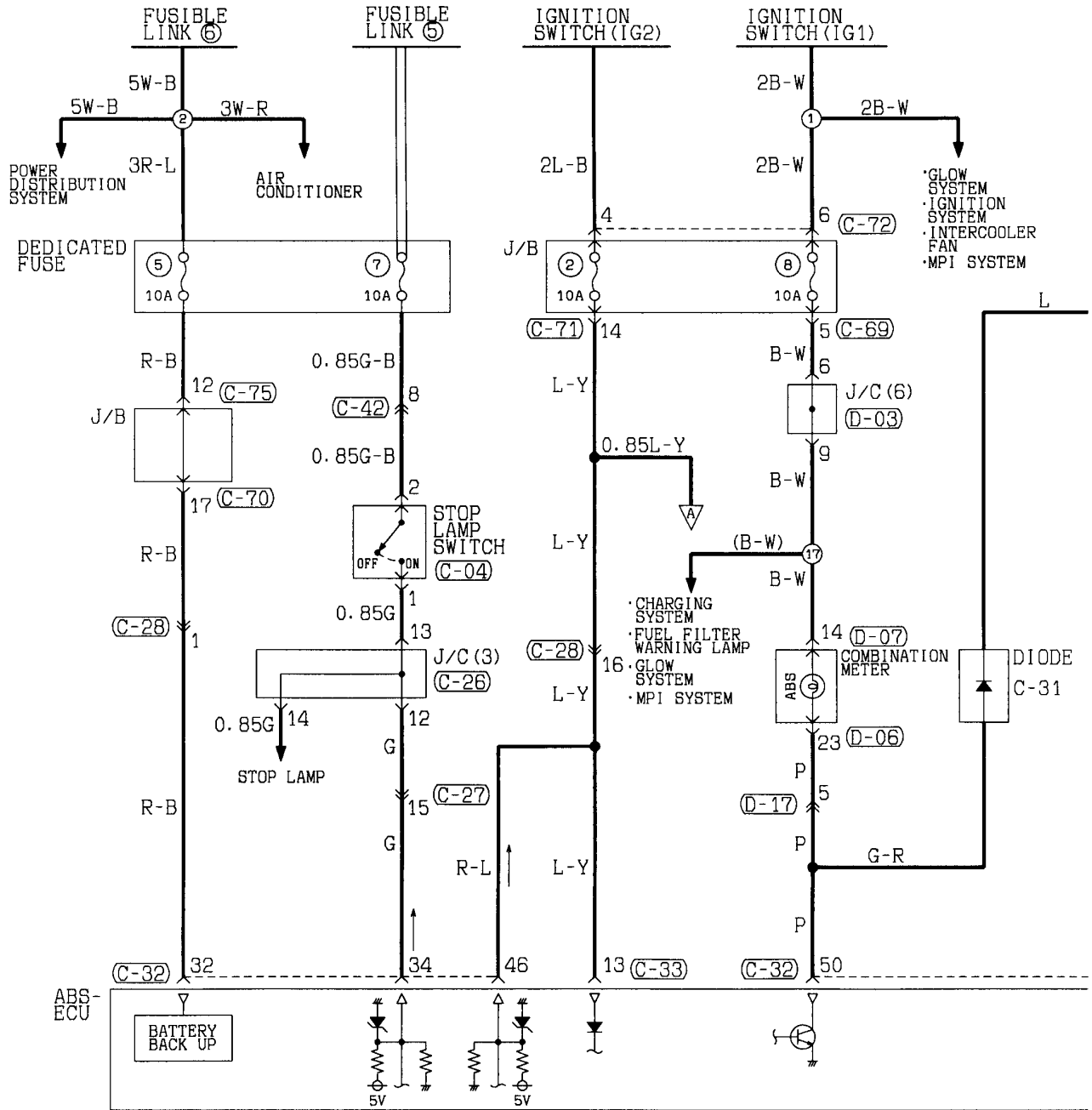


Remarks
*1: WITHOUT DOOR MIRROR HEATER.
*2: WITH DOOR MIRROR HEATER.

NOTES

ANTI-LOCK BRAKING SYSTEM (ABS)

L.H. drive vehicles <4WD>



C-04

| |
|---|
| 1 |
| 2 |

C-26

| | | | | | | | | | | |
|----|----|----|----|----|----|----|----|----|----|----|
| 1 | 2 | 3 | 4 | 5 | 6 | 7 | 8 | 9 | 10 | 11 |
| 12 | 13 | 14 | 15 | 16 | 17 | 18 | 19 | 20 | 21 | 22 |
| 23 | 24 | 25 | 26 | 27 | 28 | 29 | 30 | 31 | 32 | 33 |

C-27

| | | | | | | | | | | |
|----|----|----|----|----|----|----|----|----|----|----|
| 1 | 2 | 3 | 4 | M | 5 | 6 | 7 | 8 | 9 | |
| 10 | 11 | 12 | 13 | 14 | 15 | 16 | 17 | 18 | 19 | 20 |

C-28

| | | | | | | | | | |
|---|----|----|----|----|----|----|----|----|----|
| 1 | 2 | 3 | 4 | M | 5 | 6 | 7 | 8 | |
| 9 | 10 | 11 | 12 | 13 | 14 | 15 | 16 | 17 | 18 |

C-32

| | | | | | | | | | | |
|----|----|----|----|----|----|----|----|----|----|----|
| 31 | 32 | 33 | 34 | 35 | 36 | 37 | 38 | 39 | 40 | 41 |
| 42 | 43 | 44 | 45 | 46 | 47 | 48 | 49 | 50 | 51 | 52 |

C-33

| | | | | | | | | | | | | |
|----|----|----|----|----|----|----|----|----|----|----|----|----|
| 1 | 2 | 3 | 4 | 5 | 6 | 7 | 8 | 9 | 10 | 11 | 12 | 13 |
| 14 | 15 | 16 | 17 | 18 | 19 | 20 | 21 | 22 | 23 | 24 | 25 | 26 |

C-42

| | | | | | | | | | | | |
|----|----|----|----|----|----|----|----|----|----|----|----|
| 1 | 2 | 3 | 4 | 5 | M | 6 | 7 | 8 | 9 | 10 | |
| 11 | 12 | 13 | 14 | 15 | 16 | 17 | 18 | 19 | 20 | 21 | 22 |
| 23 | 24 | 25 | 26 | 27 | 28 | 29 | 30 | 31 | 32 | 33 | |

C-69

| | | | | | | | | | | | |
|----|----|----|----|----|----|----|----|----|----|----|----|
| 1 | 2 | 3 | 4 | 5 | M | 6 | 7 | 8 | 9 | 10 | |
| 11 | 12 | 13 | 14 | 15 | 16 | 17 | 18 | 19 | 20 | 21 | 22 |

C-70

| | | | | | | | | | |
|---|----|----|----|----|----|----|----|----|----|
| 1 | 2 | 3 | 4 | M | 5 | 6 | 7 | 8 | |
| 9 | 10 | 11 | 12 | 13 | 14 | 15 | 16 | 17 | 18 |

C-71

| | | | | | | | | | | |
|----|----|----|----|----|----|----|----|----|----|----|
| 1 | 2 | 3 | 4 | M | 5 | 6 | 7 | 8 | 9 | |
| 10 | 11 | 12 | 13 | 14 | 15 | 16 | 17 | 18 | 19 | 20 |

C-72

| | | | | | |
|---|---|---|---|---|----|
| 1 | 2 | 3 | 4 | | |
| 5 | 6 | 7 | 8 | 9 | 10 |

C-75

| | | | | | | | | | |
|---|----|----|----|----|----|----|----|----|----|
| 1 | 2 | 3 | 4 | M | 5 | 6 | 7 | 8 | |
| 9 | 10 | 11 | 12 | 13 | 14 | 15 | 16 | 17 | 18 |

D-03

| | | | | | | | | | | |
|----|----|----|----|----|----|----|----|----|----|----|
| 1 | 2 | 3 | 4 | 5 | 6 | 7 | 8 | 9 | 10 | 11 |
| 12 | 13 | 14 | 15 | 16 | 17 | 18 | 19 | 20 | 21 | 22 |
| 23 | 24 | 25 | 26 | 27 | 28 | 29 | 30 | 31 | 32 | 33 |

D-06

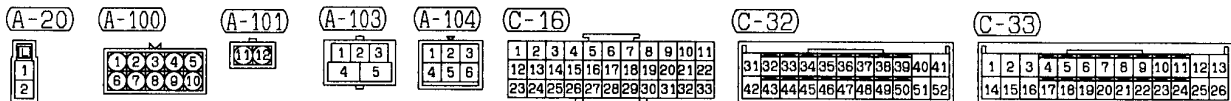
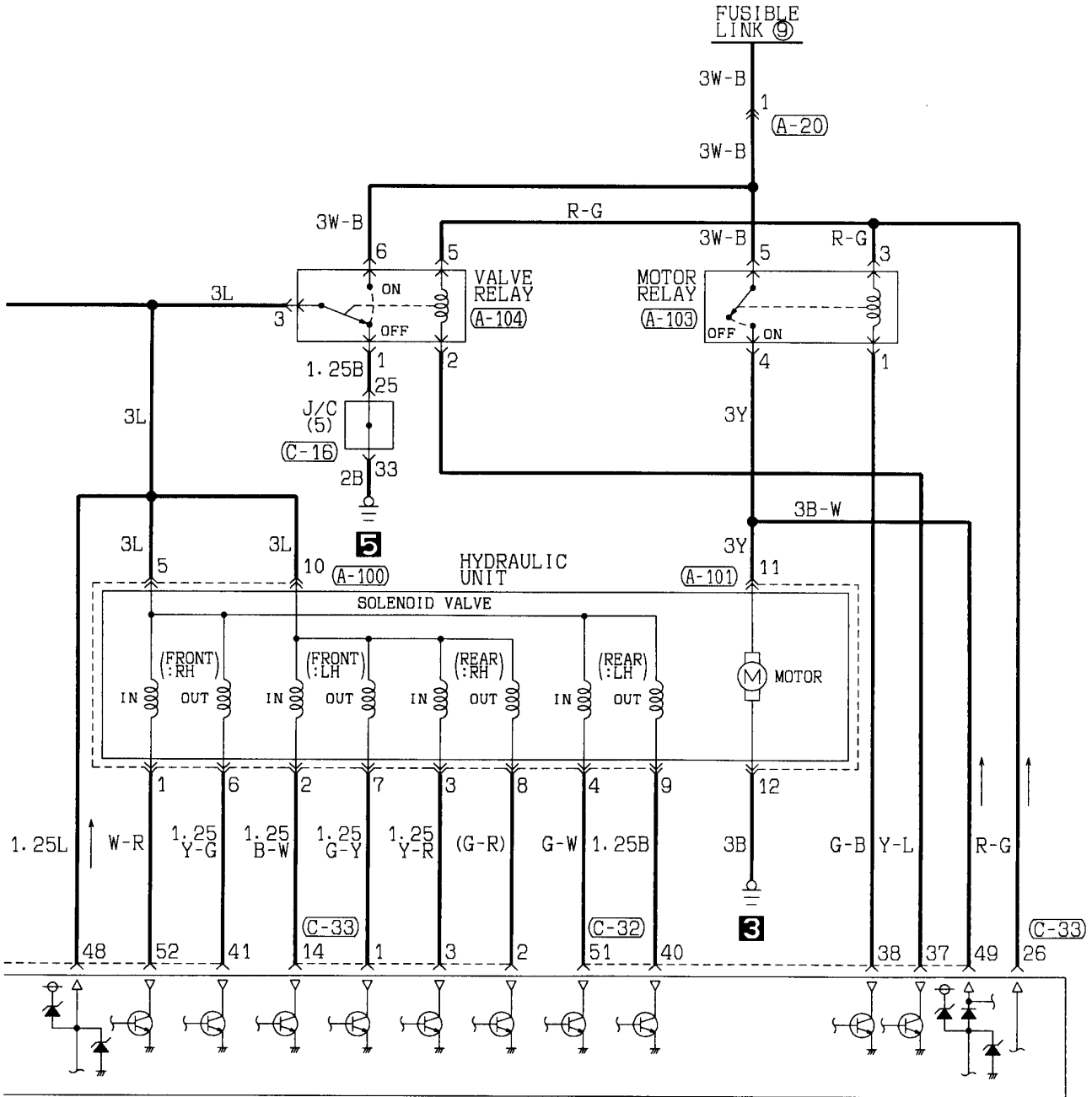
| | | | | | | | | | | |
|----|----|----|----|----|----|---|----|----|----|----|
| 21 | 22 | 23 | 24 | 25 | 26 | X | 27 | 28 | 29 | 30 |
|----|----|----|----|----|----|---|----|----|----|----|

D-07

| | | | | | | | | | | | | | | | |
|----|----|----|----|----|----|----|----|----|----|----|----|----|----|----|----|
| 1 | 2 | 3 | 4 | 5 | 6 | X | 7 | 8 | 9 | 10 | 11 | 12 | 13 | 14 | |
| 15 | 16 | 17 | 18 | 19 | 20 | 21 | 22 | 23 | 24 | 25 | 26 | 27 | 28 | 29 | 30 |

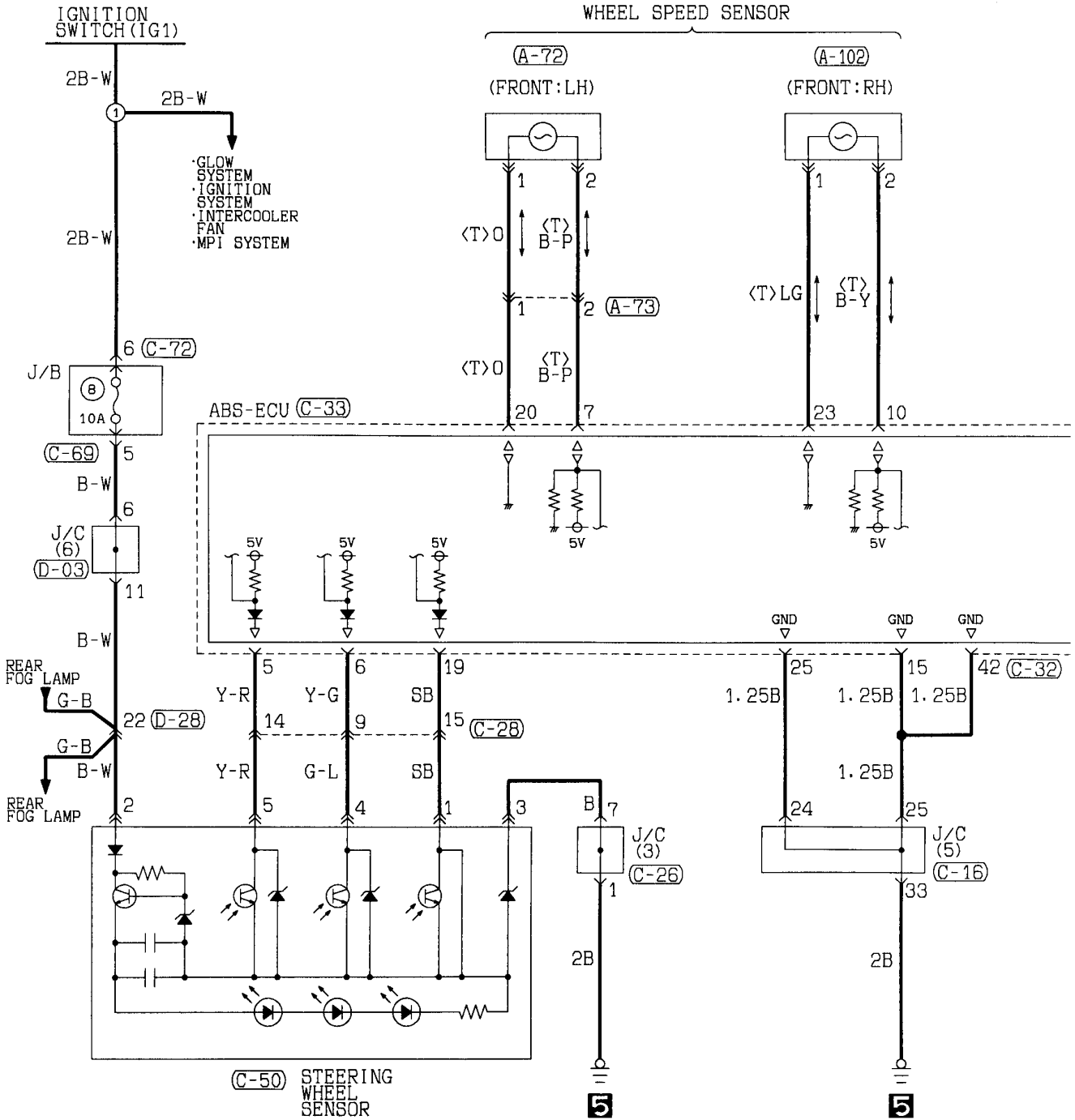
D-17

| | | | | | | | | | |
|---|----|----|----|----|----|----|----|----|----|
| 1 | 2 | 3 | 4 | M | 5 | 6 | 7 | 8 | |
| 9 | 10 | 11 | 12 | 13 | 14 | 15 | 16 | 17 | 18 |

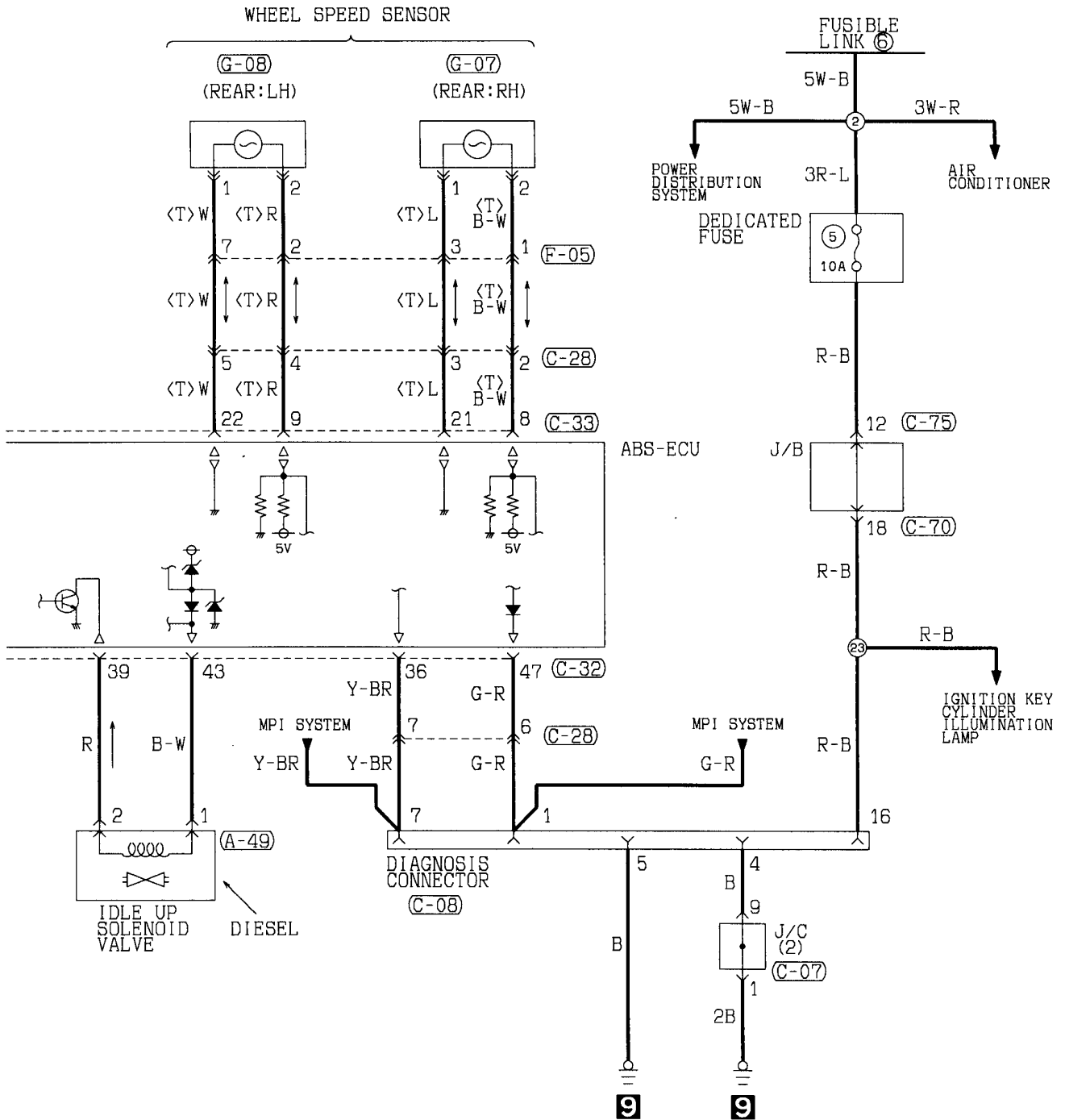


Wire colour code
 B:Black LG:Light green G:Green L:Blue W:White Y:Yellow SB:Sky blue
 BR:Brown O:Orange GR:Gray R:Red P:Pink V:Violet

ANTI-LOCK BRAKING SYSTEM <L.H. drive vehicles (4WD)> (CONTINUED)

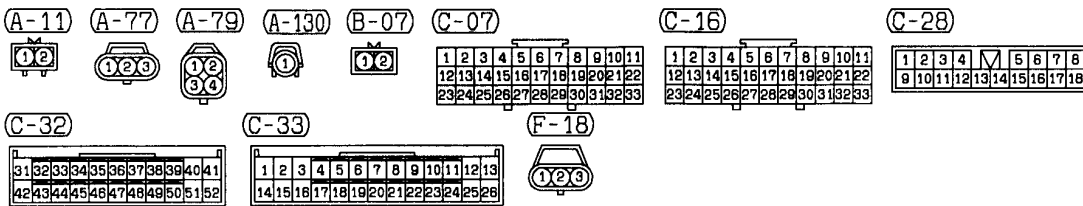
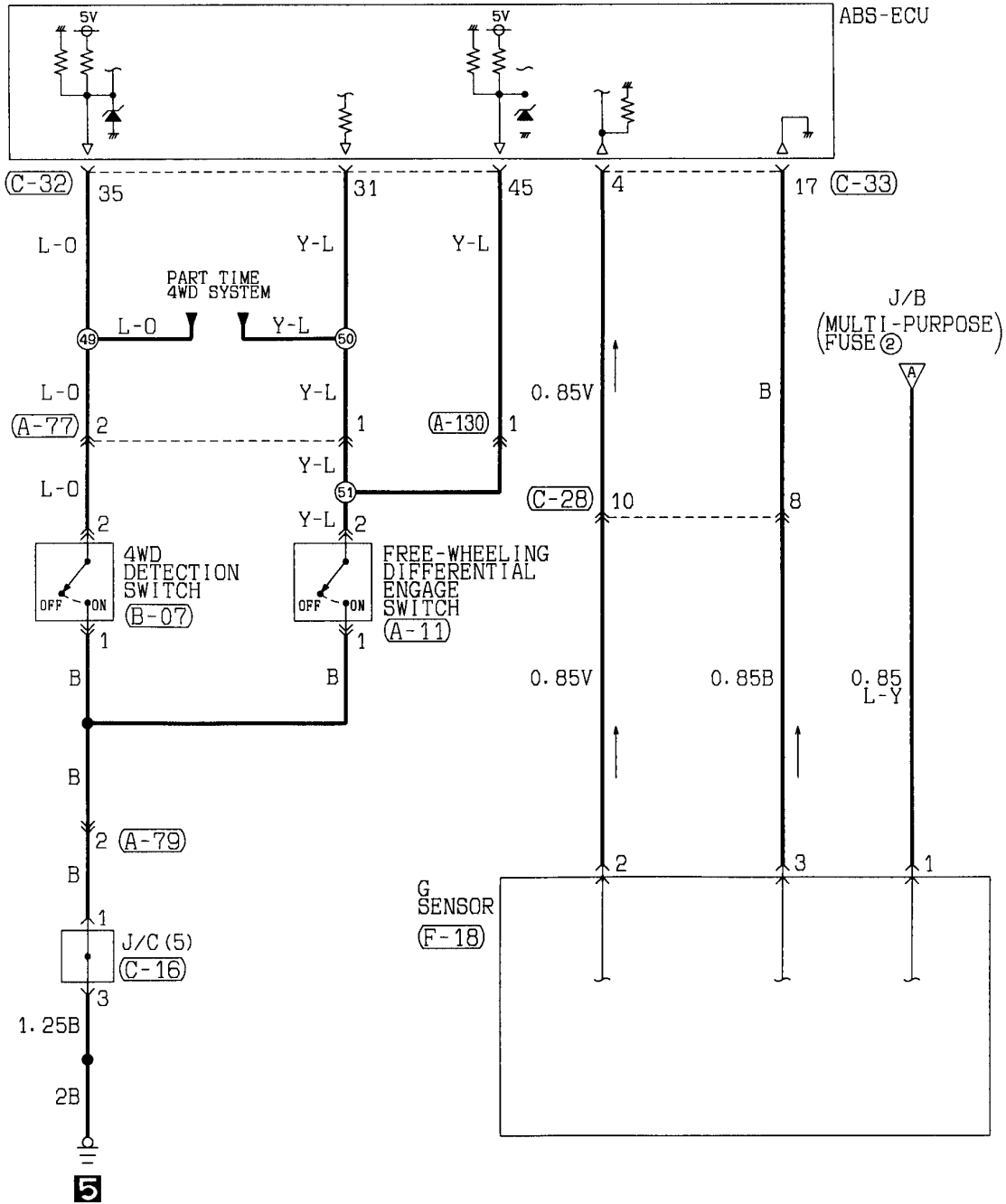


| | | | | | | |
|--------|--------|---------|--------|--------|--------|--------|
| (A-72) | (A-73) | (A-102) | (C-16) | (C-26) | (C-28) | (C-32) |
| | | | | | | |
| (C-33) | (C-50) | (C-69) | (C-72) | (D-03) | (D-28) | |
| | | | | | | |



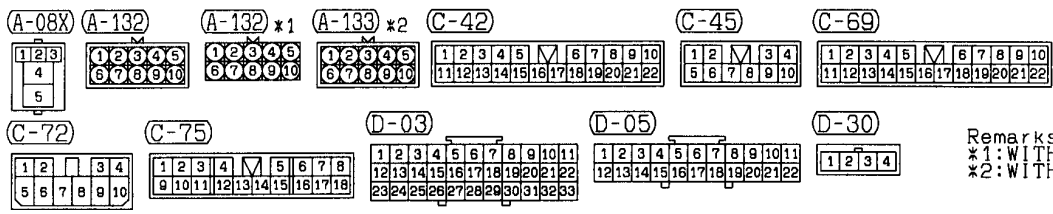
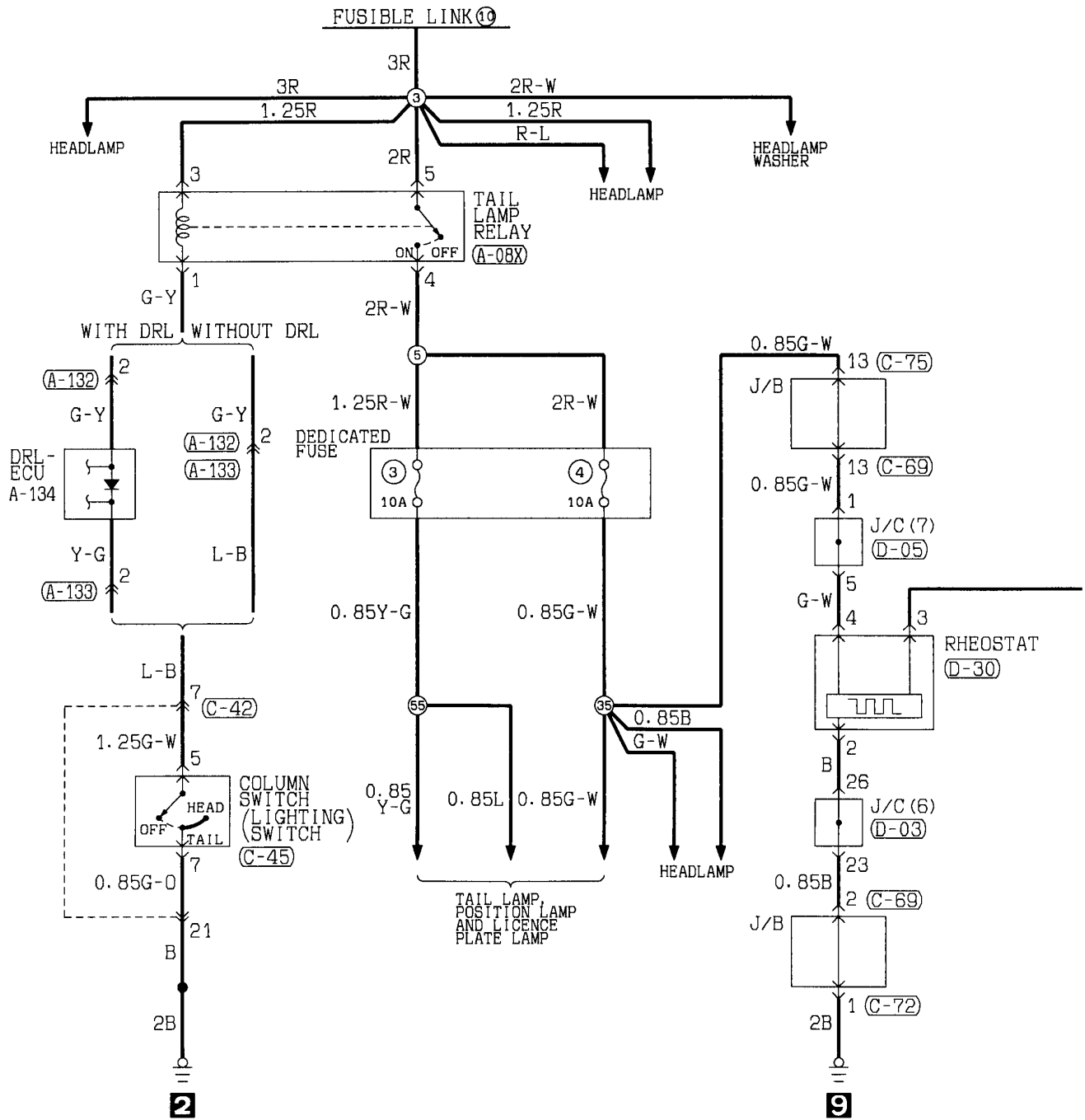
| | | | | | |
|--|--|---|--|---|--|
| (A-49) 1 2 | (C-07) 1 2 3 4 5 6 7 8 9 10 11 12 13 14 15 16 17 18 19 20 21 22 23 24 25 26 27 28 29 30 31 32 33 | (C-08) FRONT SIDE 1 2 3 4 5 6 7 8 9 10 11 12 13 14 15 16 | (C-28) 1 2 3 4 5 6 7 8 9 10 11 12 13 14 15 16 17 18 | (C-32) 31 32 33 34 35 36 37 38 39 40 41 42 43 44 45 46 47 48 49 50 51 52 | (C-33) 1 2 3 4 5 6 7 8 9 10 11 12 13 14 15 16 17 18 19 20 21 22 23 24 25 26 |
| (C-70) 1 2 3 4 5 6 7 8 9 10 11 12 13 14 15 16 17 18 | (C-75) 1 2 3 4 5 6 7 8 9 10 11 12 13 14 15 16 17 18 | (F-05) 1 2 3 4 5 6 7 | (G-07) 1 2 | (G-08) 1 2 | |

ANTI-LOCK BRAKING SYSTEM <L.H. drive vehicles (4WD)> (CONTINUED)

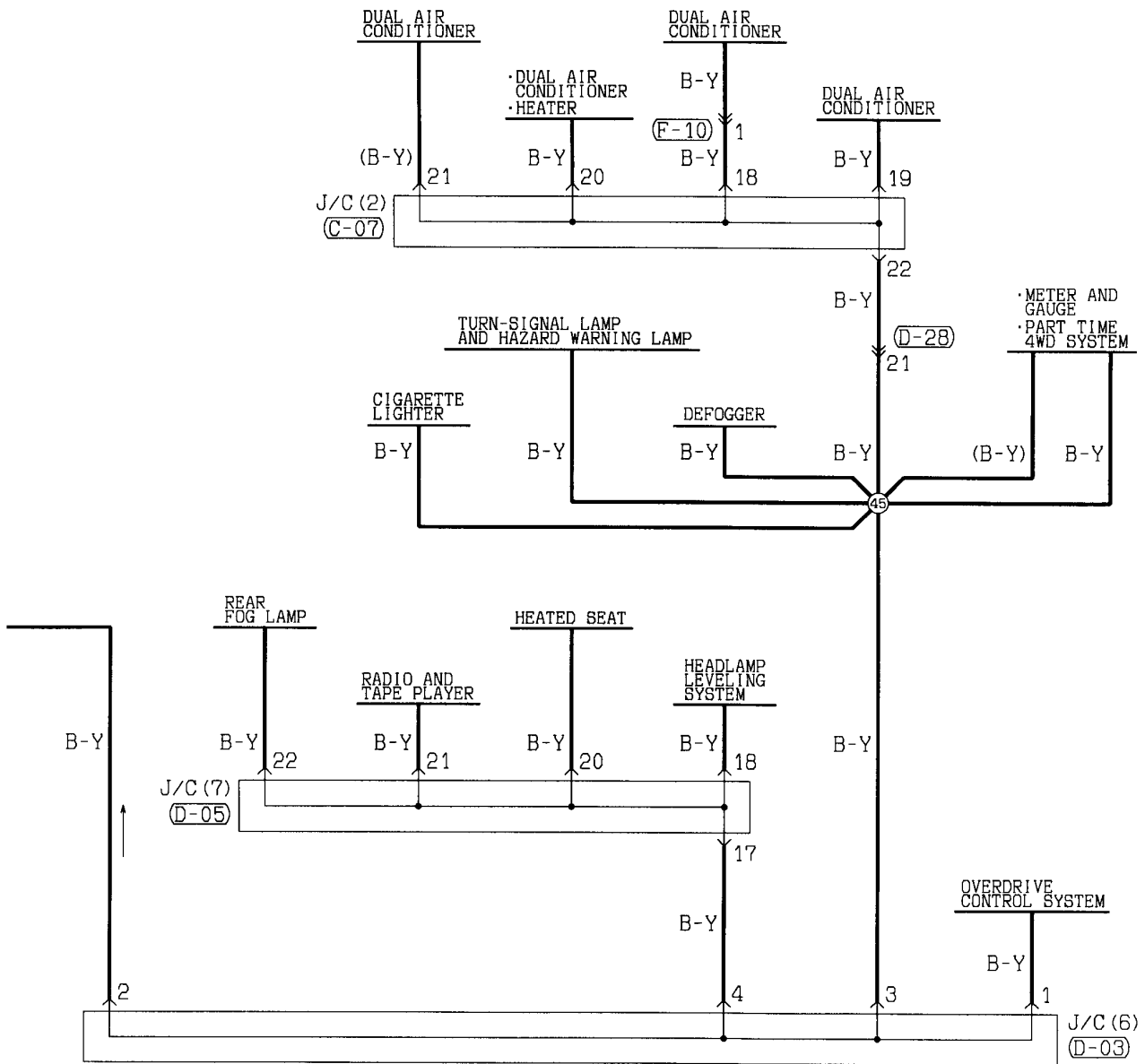


NOTES

RHEOSTAT



Remarks
 *1: WITHOUT DRL
 *2: WITH DRL



(C-07)

| | | | | | | | | | | |
|----|----|----|----|----|----|----|----|----|----|----|
| 1 | 2 | 3 | 4 | 5 | 6 | 7 | 8 | 9 | 10 | 11 |
| 12 | 13 | 14 | 15 | 16 | 17 | 18 | 19 | 20 | 21 | 22 |
| 23 | 24 | 25 | 26 | 27 | 28 | 29 | 30 | 31 | 32 | 33 |

(D-03)

| | | | | | | | | | | |
|----|----|----|----|----|----|----|----|----|----|----|
| 1 | 2 | 3 | 4 | 5 | 6 | 7 | 8 | 9 | 10 | 11 |
| 12 | 13 | 14 | 15 | 16 | 17 | 18 | 19 | 20 | 21 | 22 |
| 23 | 24 | 25 | 26 | 27 | 28 | 29 | 30 | 31 | 32 | 33 |

(D-05)

| | | | | | | | | | | |
|----|----|----|----|----|----|----|----|----|----|----|
| 1 | 2 | 3 | 4 | 5 | 6 | 7 | 8 | 9 | 10 | 11 |
| 12 | 13 | 14 | 15 | 16 | 17 | 18 | 19 | 20 | 21 | 22 |

(D-28)

| | | | | | | | | | | | |
|----|----|----|----|----|----|----|----|----|----|----|----|
| 1 | 2 | 3 | 4 | 5 | 6 | 7 | 8 | 9 | 10 | | |
| 11 | 12 | 13 | 14 | 15 | 16 | 17 | 18 | 19 | 20 | 21 | 22 |

(F-10)

| | | | | | | | |
|---|---|---|----|----|----|----|----|
| 1 | 2 | 3 | 4 | 5 | 6 | | |
| 7 | 8 | 9 | 10 | 11 | 12 | 13 | 14 |

Wire colour code
 B:Black LG:Light green G:Green L:Blue W:White Y:Yellow SB:Sky blue
 BR:Brown O:Orange GR:Gray R:Red P:Pink V:Violet